



Technical Service Bulletin

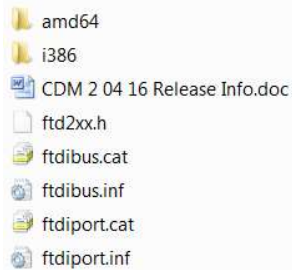
Date: July 29, 2025

Subject: SD-170EX Programming Information

Hardware/Software: ACC-2016EX programming cable; ACC-916EX programming software

Reading the Radio:

1. Plug the programming cable (ACC-2016EX) into an available USB port on the computer.
2. If this is the first time the cable has been plugged into the computer, follow the Windows Setup Wizard. Driver files for the USB cable are on the CD. If the driver files have already been installed, skip this step.



3. Run the ACC-916EX programming software.
4. The method of how the programming cable is plugged into the radio can affect programming. The picture below shows the proper method by plugging in the right corner and rolling it to the left as it is plugged in. The purpose of this is to ground RTS before power is applied. Plug the radio in.



11535 West 83rd Terrace ▪ Lenexa, Kansas ▪ 66214

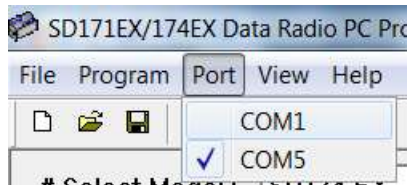
Telephone: 913-859-9515 ▪ 800-456-2071

Website: www.maxonamerica.com ▪ Email: maxon@maxonamerica.com



Note: The LED on the top of the radio should not illuminate indicating it has gone into programming mode. If it does light, check your port setting and repeat the process.

5. Select the port from the pull down menu. In this example it is COM5.



6. Select the W/R button and ignore the following message. Click on OK.



7. Select the Read or Write button from the Communication screen.
8. Radio should read or write with no issues. If problems occur, repeat the steps from number 4.

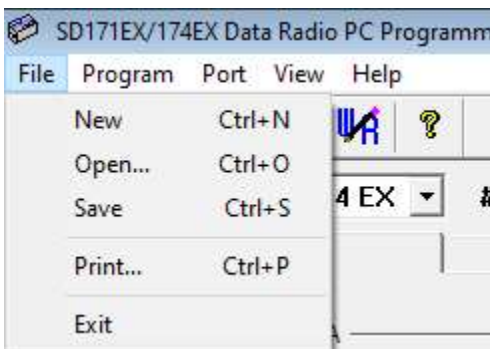


Radio Frequency Screen:

1. If you have read the radio the screen should like what is shown below.

CH	RX FREQ	RX OPT	TX FREQ	TX OPT	SCAN	Width	Power
1	450.02500	NO	450.07500	NO	OFF	N	High
2	450.02500	NO	450.07500	NO	OFF	N	Low
3	470.02500	NO	470.07500	NO	OFF	N	High
4	470.02500	NO	470.07500	NO	OFF	N	Low
5	489.92500	NO	489.97500	NO	OFF	N	High
6	489.92500	NO	489.97500	NO	OFF	N	Low
7	450.02500	67.0	450.07500	67.0	OFF	N	Low
8	450.02500	67.0	450.07500	67.0	OFF	N	Low
9	450.02500	023	450.07500	023	OFF	N	Low
10	470.02500	151.4	470.07500	151.4	OFF	N	Low
11	470.02500	254.1	470.07500	254.1	OFF	N	Low
12	450.02500	023	450.07500	023	OFF	N	Low
13	470.02500	NO	470.07500	NO	OFF	N	Low
14	470.02500	NO	470.07500	NO	OFF	N	Low
15	471.02500	Both	471.07500	NO	OFF	N	Low
16	471.02500	Both	471.07500	NO	OFF	N	Low

2. Across the top of the programmer there is File, Program, Port, View and Help.
Under File, there is:





New: for creating a program from scratch,

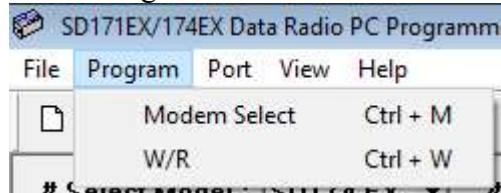
Open: for opening a previously saved file.

Save: to save a program that is newly created or read from a radio.

Print: to print the information displayed on the screen.

Exit: to exit the program completely.

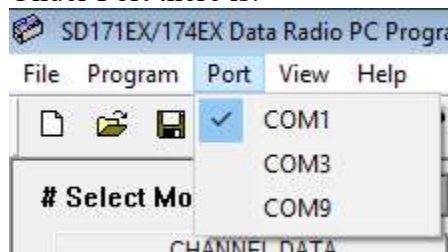
3. Under Program there is:



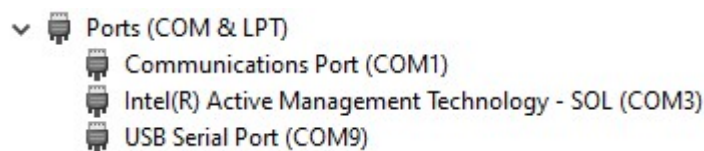
Modem Select: this allows you to select if a modem is going to be used or not.

R/W: gives short instructions for reading and writing to the radio.

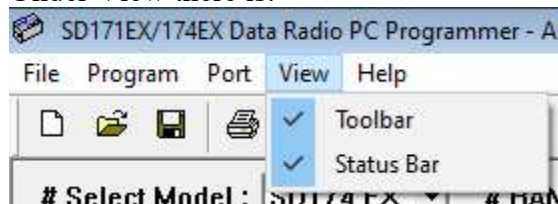
4. Under Port there is:



These are the available ports selectable. It may be necessary to go to the Device Manager on the computer to find the correct port number. In this case it is COM9.



5. Under View there is:

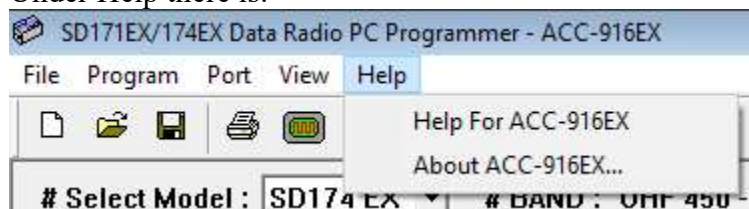


Toolbar: this can be hidden by unchecking the box.

Status Bar: this can be hidden by unchecking the box.



6. Under Help there is:



Help For ACC-916EX: this is the Help Menu for the programmer. Specific information on the features of the programmer are explained here.
About ACC-916EX: this will show you the version number.