

## **Technical Service Bulletin**

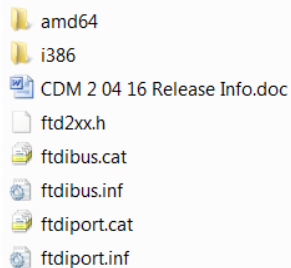
**Date:** August 8, 2019

**Subject:** SD-170EX Programming Steps

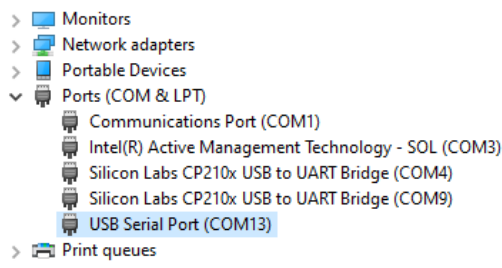
**Issue:** Intermittent programming of the SD-170EX series radio when using the ACC-2016EX. Methods of programming corrects this issue.

**Instructions:**

1. Plug the programming cable, ACC-2016EX into an available USB port on the computer.
2. If this is the first time the cable has been plugged into the computer, follow the Windows Setup Wizard. Driver files for the USB cable are on the CD. If the driver files have already been installed, skip this step.

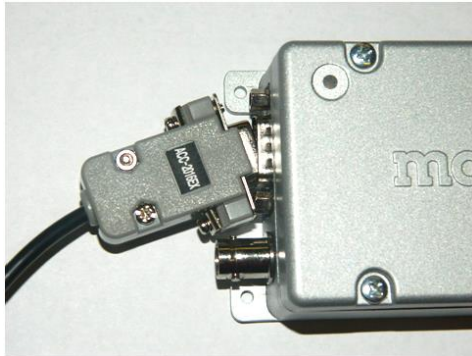


To verify the port number, it can be viewed in the Device Manager. In this example it is COM13.

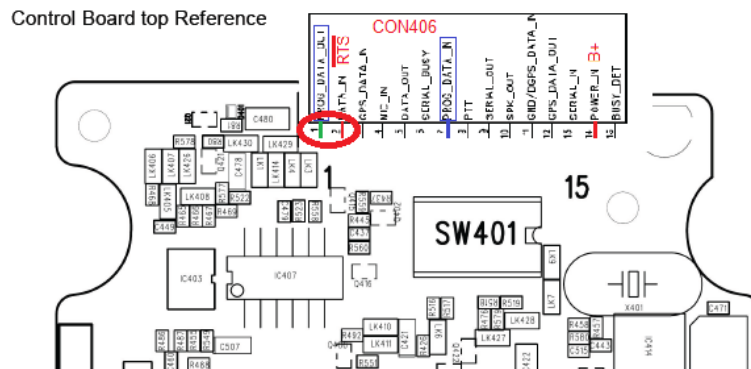


3. Run the ACC-916EX programming software. Before selecting the port number, plug the cable into the radio. Check the LED illumination on the radio while plugging the cable in. If it **does not blink** the radio has gone into programming mode. While in this state, simply select the port number from the menu and read/write to the radio. Ignore any pop-up windows stating to reset the power.

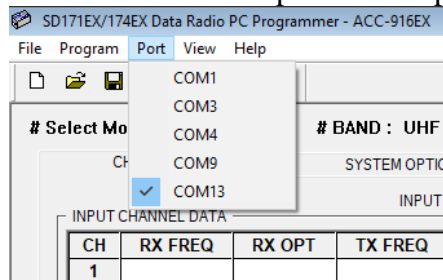
One alternate method is to plug the cable into the radio at an angle as shown. The purpose again is to not let the LED illuminate.



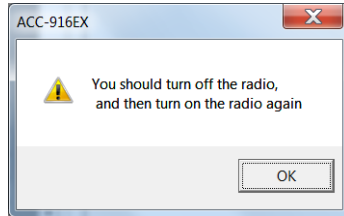
4. If the steps above don't allow the radio to go into programming mode, try the following:
  - RTS (request to send) line needs to be high to place the radio into programming mode.
  - Probably the easiest way to do this is to short pins 1 and 2 on CON406 using a small screwdriver then plug in the programming cable. Next remove the screwdriver. The radio will be forced into programming mode. Also ignore the cycling of power.



5. To select the port use the pull down menu.



6. Select the W/R button and ignore the following message. Click on OK.



7. Select the Read or Write button from the Communication screen.
8. The radio should read or write with no issues. If problems occur contact Technical Support at 800-456-2071.