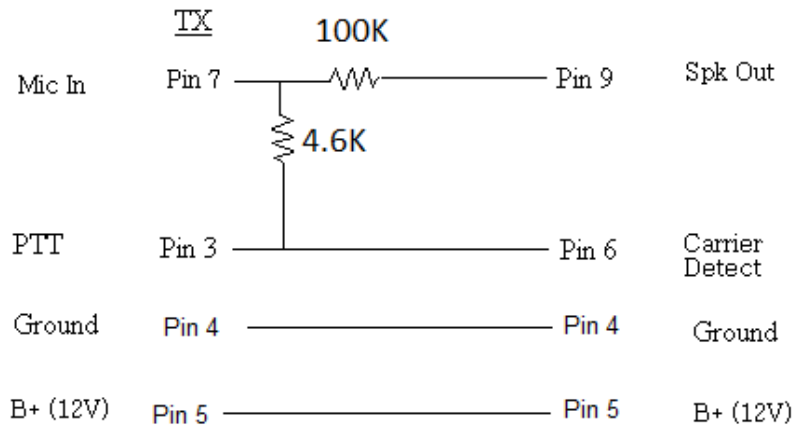


SD-170EX Series Repeater Cable

Purpose: To create a simple 5W repeater using two data radios.

Date: 6-27-13

Cable Connectors are DE9 female



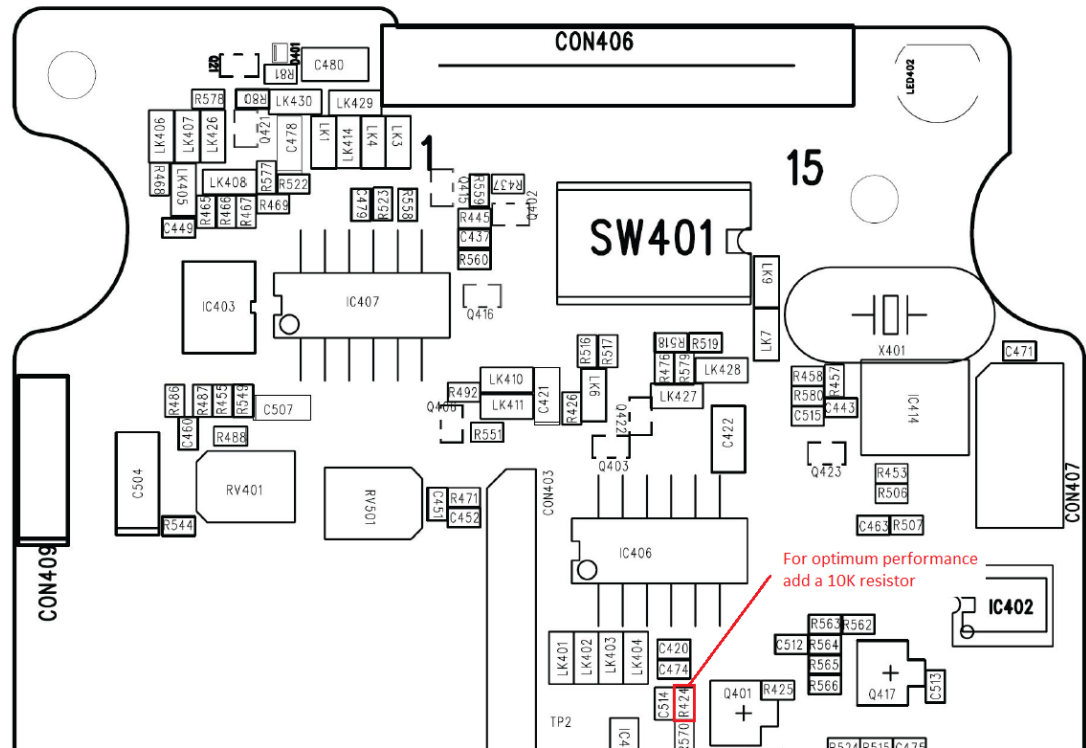
Power Supply
Connect power to TX radio then run power through cable to RX radio.

Programming & Features

1. Programming for both radios should be the same in the event of a radio failure. It may be possible to hot-swap the radios in the field.
2. “TX Tone Generation for Data Input” should be turned “on”.
3. Time out timer can be set from 10s to 990s.
4. High/Low TX power. 5W or 1W.
5. CTCSS or DCS signaling.
6. V2, U1, and U2 bands available.
7. Narrow band or standard band operation.

Tuning

1. Adjust Speaker Out (pin 9) on the RX radio to 640mVRMS using a 1 kHz tone @ 1.5 kHz deviation; narrow band. Newer radios are missing R424 (10K) resistor. For optimum performance this resistor should be added. If not, Speaker Out should be lowered to 500mVRMS.



2. Adjust tone deviation using RV402 on the TX radio for 400Hz narrow band and 750Hz wide band.
3. Adjust modulation using RV2 to 2.3kHz narrow band and 4.5kHz wide band.

Note: The cable connecting the 2 radios together must have the end with the power cable connected to the transmit radio.