

Technical Service Bulletin

Date: September 10, 2019

Subject: TMD-1000 ignition sense

Issue: Radio does not boot up when power is cycled at the power cord itself. The On/Off button must be held to turn the radio back on. Adding a wire to the DE26 corrects this issue.

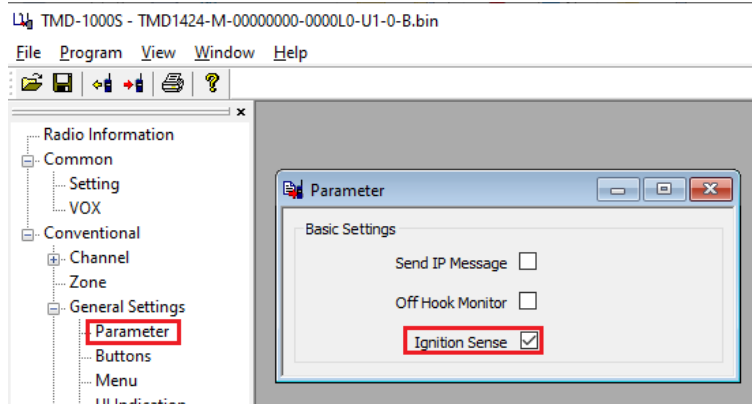
Instructions:

1. A D-Sub can be purchased through Digi-Key or by calling us at 1-800-456-2071. The part number is AE11040-ND.



A-HDS 26 LL/Z
AE11040-ND
CONN D-SUB HD PLUG 26POS

2. Pin 26 on the D-Sub is the ignition sense input. Solder a wire onto pin 26 that is long enough to connect to the 12V ignition switching circuit of the vehicle.
3. Since you will be using the ignition sense circuit built into the radio, enable ignition sense using the programmer. It is located as shown.



4. Connect the D-Sub to the back of the radio and connect the loose end of the wire to the switched circuit.
5. Reinstall the radio into the vehicle.
6. Start the vehicle. The radio should come on automatically after a few seconds. When the vehicle is turned off it should power down the radio too.

If you have any questions feel free to call us at 1-800-456-2071, central time 8am-5pm, M-F.