



TecNet International Inc.

Supplier of TecNet & Maxon Communication Products

Programming of TP-8000BT Portables

Date: August 27, 2014

Subject: Programming of TP-8000BT Series Bluetooth Portables versus TP-8000 Series Portables

The programming of a TP-8000BT Bluetooth series may be slightly different than programming a standard TP-8000 series portable. The radio will inadvertently go into a Bluetooth (BT) mode when turned on and prohibit programming. The procedure listed below will work around this issue.

1. Plug the ACC-8050E programming cable into the computer.
2. Go to the Device Manager on your computer and check which port is in use by the cable. In this example (Figure 1) it is COM4.

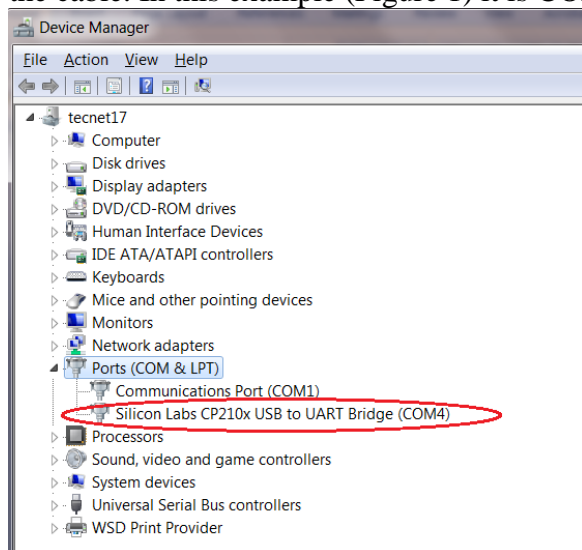


Figure 1

- Next, run the ACC-805N programming software and select the correct port from the drop-down menu. There should be a checkmark next to the port number (Figure 2).

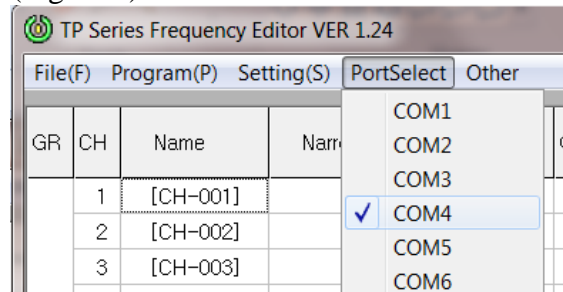


Figure 2

- Plug the 2-pin end of the programming cable into the jacks on the side of the radio. **Make sure the radio remains off.**
- On the programming screen, select Read Radio or press the F4 button on your keyboard.
- When **this window is displayed (Figure 3)**, turn the radio on. Note that a circled “S” will be on the right side of the radio’s display. This indicates it is ready for serial communication.

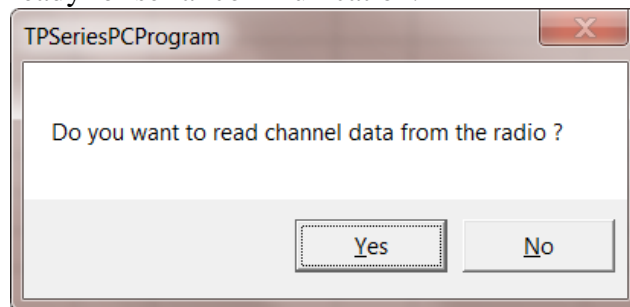


Figure 3

- Click on “Yes”. The radio personality should be read from the radio and displayed on the programmer. If problems occur, repeat the process.
- The radio is now ready for input of data, reading radio, etc.

Note 1: When programming a TP-8000 series portable (non-Bluetooth), the status of the radio being on or off upon insertion of the programming cables into the radio jacks has no consequence.

Note 2: If you wish to program a new personality into the radio, it is best to create a new file. This is done by selecting "New" from the drop down menu.