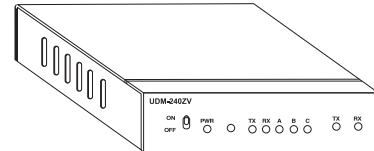


maxon®

Digital Mobile Transmission System Model UDM-240ZV User Manual

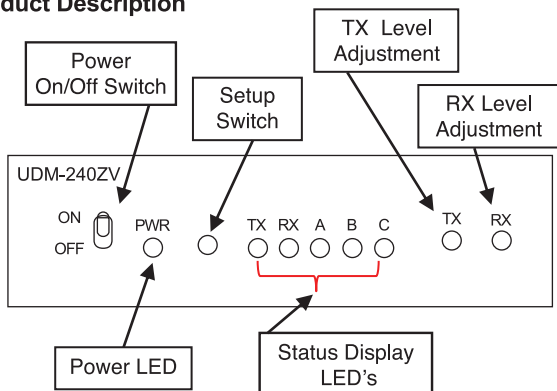
maxon®



Maxon America, Inc.
11535 W. 83rd Terrace
Lenexa, KS 66214
Phone: 913-859-9515 Fax: 913-859-9550
Email: maxon@maxonamerica.com www.maxonamerica.com

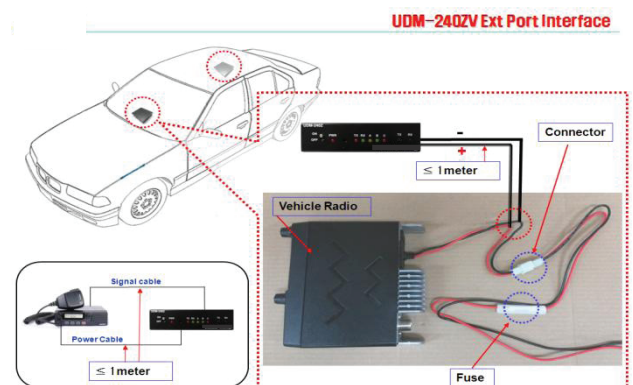
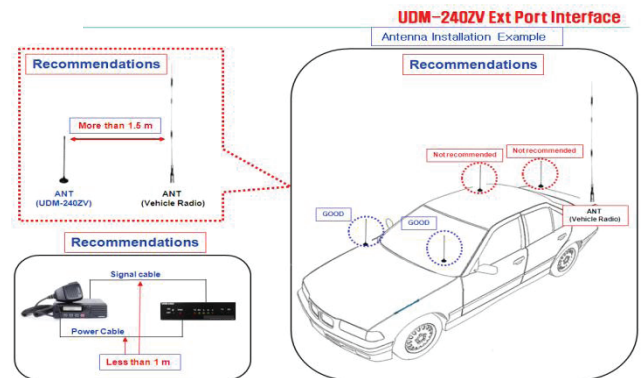
Please read this manual before installing and use.

Product Description



How to Use

- Move On/Off Switch to the On position, Power LED will be illuminated indicating the device is on.
- Press the PTT button on the UDM-240ZH, the TX LED will be illuminated and it will control the mobile radio's TX (transmission) connected to UDM-240ZV by wire.
- When the mobile radio receives a call, the RX LED will be blinking and the call will be forwarded to the UDM-240ZH.



Features

The UDM-240ZV is a device that is hardwired to a mobile radio and interfaces with the UDM-240ZH for wireless transmitting and receiving. Operation between the ZV and ZH is in the 2.4 GHz range.

- Up to 300' (100 meters) of communication range
- Interfaces with most major brand mobile radios
- Independent TX microphone gain adjustment
- Operating channel setup

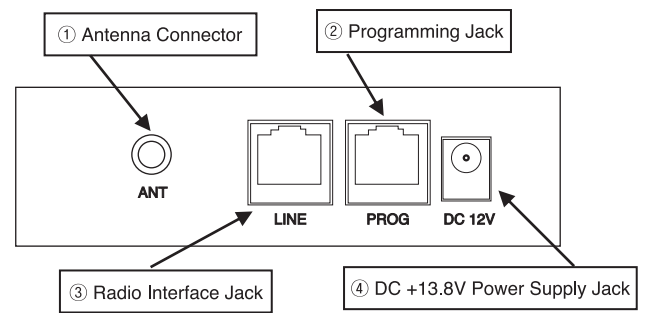
Package Contents

- UDM-240ZV
- Radio Interface cable with loose leads
- Power cable - DC power cable (+13.8 VDC)
- Antenna (7dB) with cable and SMA connector
- User manual
- Interface manual

Warranty

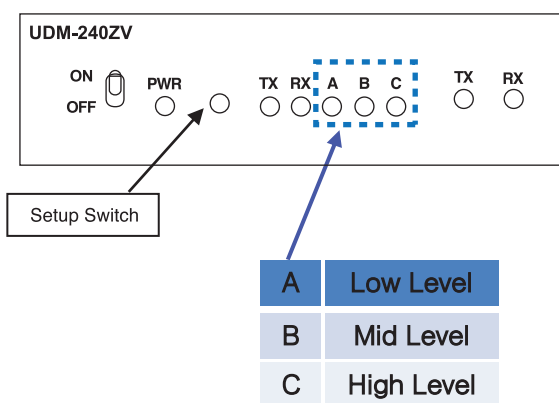
Maxon America, Inc. offers to the original end user a one (1) year Limited Warranty.

Connectivity



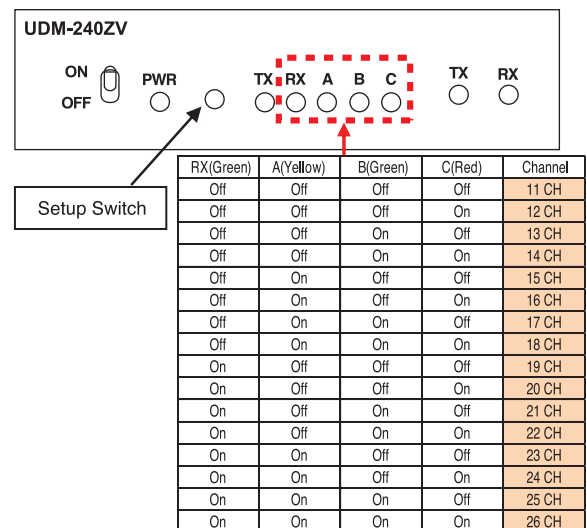
- ① Connect the supplied antenna.
 - ② Programming Jack is for engineering use/mode only.
 - ③ Connect with a mobile radio by using the supplied interface cable.
 - ④ Connect the power cable.
- *Note: Refer to the interface manual for mobile hook-up.**

Audio Level Adjustment



- The Audio Level Adjustment on the UDM-240ZV is independent of the volume control on the UDM-240ZH units. The default is set to C-High Level. In the unlikely event that the audio level needs to be changed on the UDM-240ZV the procedure is as follows: While pressing the setup switch, turn the UDM-240ZV on and keep pressing the switch for more than 3 seconds. LED's A, B, and C will blink once and the current volume level LED will be indicated. With each press and release of the setup switch, the audio level will change. When the desired level is achieved, press and hold the setup switch for 3 seconds to save the level you select.
- Note: This adjustment cannot be performed while the mobile radio is receiving.

Operating Channel Setup



- How to change the operating channel:
- When the UDM-240ZV is on, press the setup switch for more than 8 seconds. Release the setup switch after the 4 designated LED's flash. Continue pressing the setup switch until the channel you want is shown by the sequence of LED's per the chart shown above. After obtaining the desired channel press and hold the setup switch for 8 seconds. This will save the channel and exit the channel setting process. The channel on the UDM-240ZH must match the channel on the UDM-240ZV. Test the operation by pressing the PTT on the UDM-240ZH and verify the mobile goes into transmit mode.